

Ergoline Sundash 332 Pro

SUN | DASH

332 Pro

Forever Tan
113 Freeland Lane
Charlotte, NC 28217
1-800-447-0040

**For questions concerning this guide please
contact Andy Turner:**

andy.turner@forevertan.net
1-800-467-5473 direct
704-971-4748 local
704-607-4243 cell

Electrical – 6 pages

This unit requires a 120/208 or 120/240 volts, single phase, 20 amp (4 wire) circuit – Actual amp draw of 14 amps - These units have approximately 6 ft. of # 12 AWG wire (2 hots, 1 neutral and 1 ground) coming out of the back, in the center. The wire comes out through a ½ inch liquid-tight flex connector. These wires must be sleeved with flex and brought into a junction box. *Do not shorten these wires, as this additional length is necessary to be able to pull out the bed for servicing.* The wires should then be tied into a dedicated single phase, 20-amp (4 wire) circuit. Contact a licensed electrician. Check local code for disconnect requirements. *All locations are given as if you were standing in front of the bed or unit.*

Junction box placement

43” from either side – 6” up

These measurements are where the *conductors* come out of the *back* of the unit and are given as if you are standing in *front* of the equipment. The junction boxes should be placed within 1 foot of this. These conductors must be sleeved with liquid tight flex.

.

*****Forever Tan does not do any electrical wiring. The electrician must do the pre-wiring then return for the final hook-up during the equipment installation. This includes the wiring of any transformers.**

*****Due to insurance and liability reasons NO employee of Forever Tan is allowed (either written or verbally) to include any wiring with the purchase of tanning equipment from Forever Tan.**

*****Employees of Forever Tan do not mount timers or body fans to walls.**

*****The factory is allowed by ETL to size the wire coming out of the beds to match the amp draw not the size of the circuit (Appliance Rule). Wire gauges may be smaller (or larger for phase conversion purposes) than listed for circuit.**

***** All information concerning wire gauge and breaker size are calculated using the NEC table B-310-1 for 75 degree Celsius wire no more than three conductors in a raceway or cable in free air. Electrical contractors should verify all information on wire gauge and breaker sizes. Forever Tan will take no responsibility for any miscalculations or any misprints.**

***** Forever Tan will allow all beds to be cord and plug connected. Forever Tan requires that the conversion from hard-wire to cord and plug be made externally. Forever Tan will not provide materials and/or labor for any conversions.**

*****All information is subject to change at the manufactures and Forever Tan's discretion.**

If you have any questions please e-mail Andy Turner at andy.turner@forevertan.net or at 1-800-467-5473.

TIMER WIRING INFORMATION

The cable required for the “*Single Station*” remote timers is a 4 conductor 24 AWG flat cable commonly known as “Silver Satin”. It can be purchased from Forever Tan Service Department for \$.08 per foot.

The cable required for the CCS IV “*Back-Bone System*” is a 4 conductor 24 gauge shielded cable. It can be purchased from Forever Tan Service Department at the rate \$95.00 for 1000 ft or \$65.00 for 500 ft.

The “*Back-Bone System*” is used when networking multiple beds to the Intellitan CCS IV or T-Max Manager Pro main station timer. The “*Back-Bone System*” utilizes a single continuous run of 4 conductor 24 gauge shielded cable that starts in a single-gang box near the mounting location of the CCS IV or T-Max Manager Pro main station timer, from there it loops through (12 inches, uncut) single-gang boxes in each room and terminates in a single-gang box in the last room. After the cable has been pulled and looped through each box a 110 punch-down jack (AMP 41106-RI6) is installed on the cable (using a punch-down style jack eliminates the need to cut the cable). The jack is then mounted to the faceplate (AMP 41080-1IP) the faceplate is then attached to the single-gang box. The jacks may be purchased from Forever Tan Service Department for \$3.00 each and the faceplates for \$2.00 each. Forever Tan Service Department will install the jacks and plates (at the time of delivery of the units) for an additional \$5.00 per room, provided that the cable and the single-gang boxes have already been installed by you (the owner) or your electrician PRIOR to the delivery of your tanning units. (See diagrams.). **IMPORTANT NOTE;** The CCS IV or T-Max Manager Pro main station timer requires a 120-volt outlet within 4 feet of where the timer will be mounted. This does not have to be a dedicated circuit.

See individual diagrams for placement of outlet boxes.

IMPORTANT

Forever Tan does not do any pre-wiring or installing of timer wires. We recommend having an electrician do this for you. The wire is available from the Forever Tan Parts Department.

No employee of Forever Tan is allowed (either written or verbally) to include any timer wiring with any purchase of tanning equipment from Forever Tan.

Forever Tan will (for additional charge) terminate the timer connections upon delivery of the beds/equipment if the pre-wiring is complete.

Forever Tan does not mount timers on the walls.

BACK-BONE TIMER WIRING DIAGRAM

ELECTRICAL CONNECTION:
 JUNCTION BOX MOUNTED
 12-18 INCHES OFF FLOOR
 WITH THE APPROPRIATE
 DEDICATED CIRCUIT
 PULLED INTO IT.

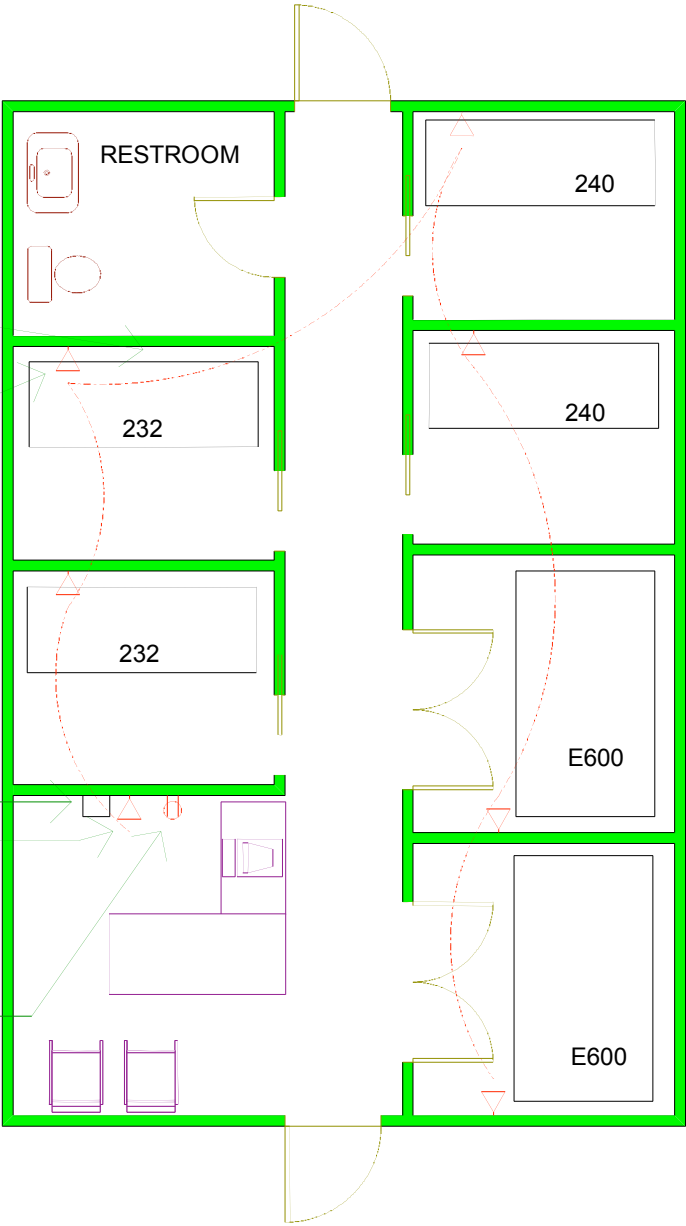
SINGLE GANG OUTLET BOX
 WITH A 12 INCH LOOP (UNCUT)
 OF 24 GAUGE 4 CONDUCTOR
 SHIELDED WIRE.

** SEE INDIVIDUAL DIAGRAMS
 FOR RECOMMENED PLACEMENT
 OF OUTLET BOXES

CCS IV MAIN STATION REMOTE
 TIMER

SINGLE GANG OUTLET BOX -
 THIS IS WHERE THE 24 GAUGE 4
 CONDUCTOR SHIELDED CABLE
 MUST START FROM.

120 VOLT OUTLET WITHIN
 4 FEET OF WHERE THE
 TIMER WILL BE PLACED.

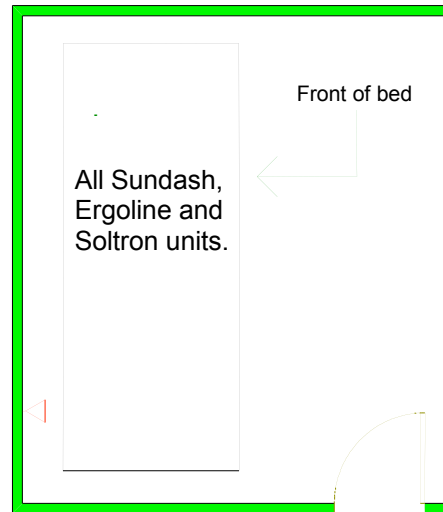


Placement of single gang box containing network wire for the following equipment models:

All Sundash , Ergoline and Soltron units.

This placement is approximately 12 inches off side wall and 24 inches from the floor

Side wall



Length:	85"
Width:	41"
Height:	39.8" - 49.6"
No. of Lamps:	32 Low Pressure & 1 High Pressure
Electrical:	120/208VAC and 120/240VAC
Circuit Required:	20 Amp Breaker

This unit requires a minimum room size of 7 x 8. The hallway should be a minimum of 48" wide and a doorway size of at least 36".

Audio
Speaker Placement

Speaker Placement

To have your wall or flush mount speakers directly behind the customer's head they should be placed on the wall to the left side of bed, 27" from back wall, 23" off the floor.

***Speaker placement was measured allowing 6 inches of clearance at the back of the unit for electrical hook-up. You may use the equipment measurements provided to draw a footprint of the unit on the floor of the room and determine where you want the speaker.**

Ergoline Sundash 332 Pro

HVAC – 1 page

This unit produces 11250 BTU's of heat per hour. The factory recommends a minimum of .5 tons of A/C to offset the heat produced by this unit.

Please consult a Mechanical Contractor.

The heat is exhausted out the back of the unit and is forced straight up by a 1750cfm fan.

Open Ceiling vs. Dropped Ceiling

Forever Tan has found that (if feasible) it is best to leave the ceiling open. If the ceiling is open and the A/C is piped down it allows the heat to rise past cool air. This makes it easier for the cool air to reach the floor. A dropped ceiling traps the heat and makes it harder for the cool air to reach the floor (it also warms your cool air before it has a chance to reach the floor). When an open ceiling is used the Mechanical Contractors should run all hard ductwork. This will consist of a main trunk line with 8"- 12" round pipe dropped over each room (hard duct allows it to be painted).

***Theses numbers are only recommendations, the mechanical contractor should calculate the A/C requirements, taking in to consideration the unique aspects of each space or building.

If you have any questions please e-mail Andy Turner at andy.turner@forevertan.net or at 1-800-467-5473.